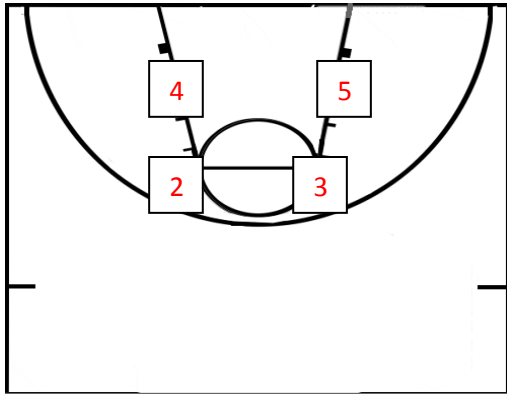


Endline and Sideline Plays

Irish Womens u19 Basketball 2009

Box 2 End line play Diagram A

1



Starting spots

4 + 2 start ball side.

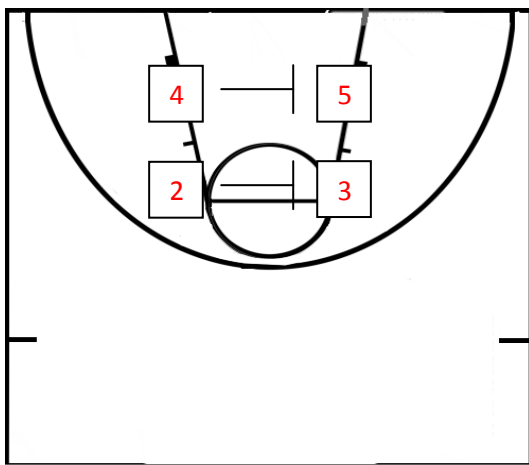
4 on the block, 2 on the elbow

5 on the opposite block

3 on opposite elbow

Box 2 End line play Diagram B

1



4 screens away for 5 and rolls back to the ball

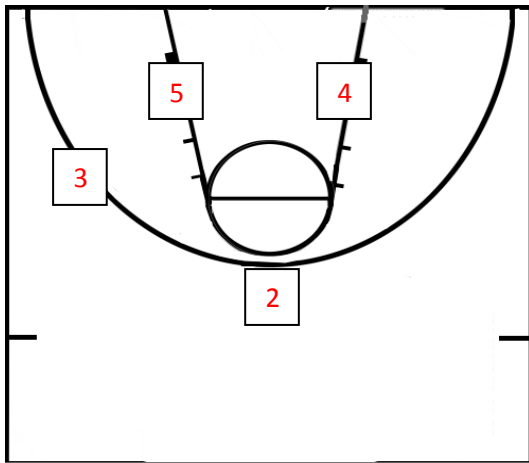
2 screens for 3.

3 cuts out to the wing for the ball

2 rolls back onto the three pt line.

End line play Diagram C

Box 2 1



Options :

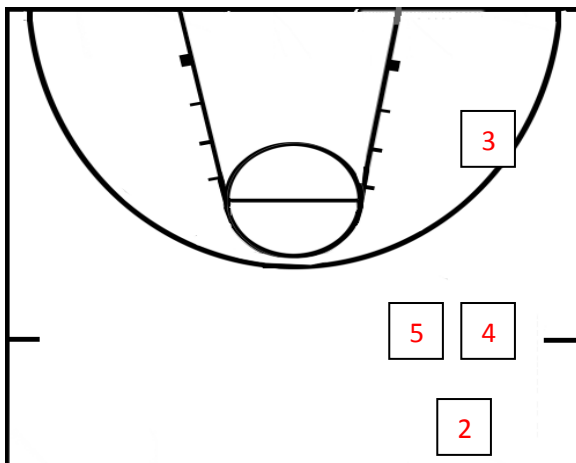
4 under the basket sealing her player

5 coming off screen

3 for shot or pass into 5 inside.

2 for jump shot or release pass

X Side line play Diagram A



Starting positions

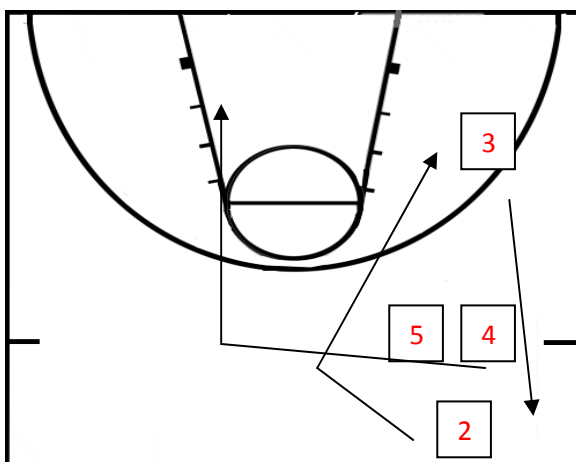
1 takes the ball out of bounds

3 starts just below the FT line

4+5 stacks up just outside the 3 pt line

2 stands just at the half way line

X Side line play Diagram B



Movement

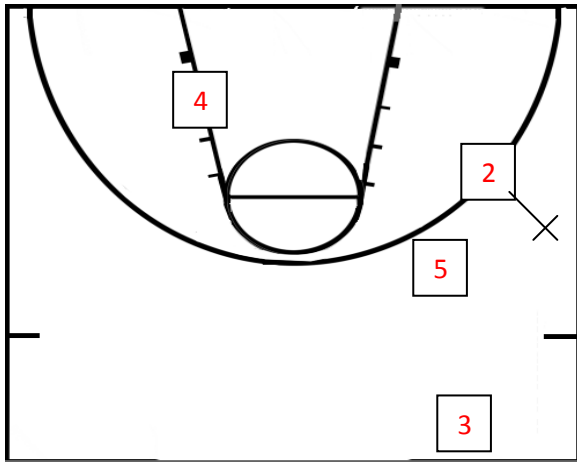
3 cuts in front of the stack

2 cuts behind

4 cuts to the basket of a screen from 5

5 steps to the ball

X Side line play Diagram B



Options

4 on the back door cut

2 cutting towards the basket

1 passes ball to 3

2 sets back screen for 1